

Arlington National Cemetery (ANC)
Ord and Weitzel Gateway Rehabilitation
Arlington, Virginia

PROJECT DESCRIPTION,
AREA OF POTENTIAL EFFECTS, and
ASSESSMENT OF EFFECT

January 2, 2020

PROJECT DESCRIPTION

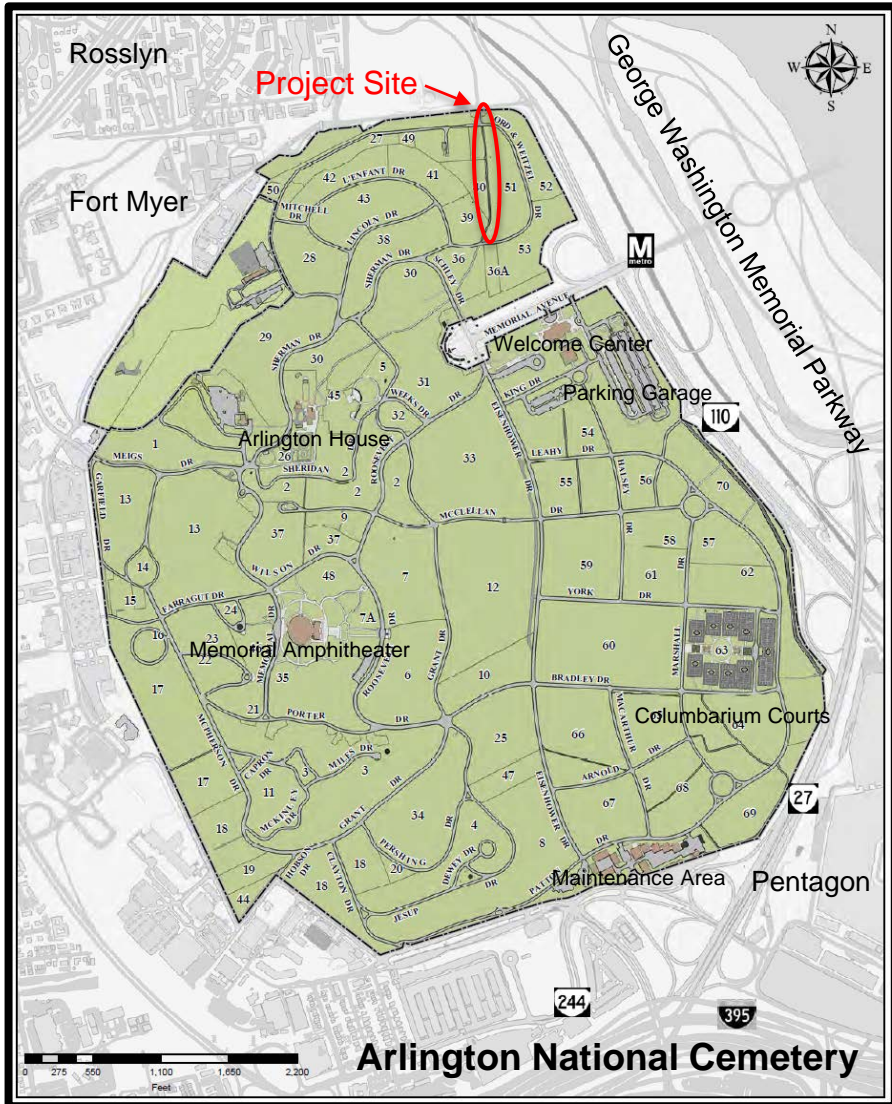
The proposed undertaking at Arlington National Cemetery (ANC) is a rehabilitation of the gateway on the north side of the cemetery and focuses on reassembly of historic stone columns.

The columns, known as the Ord and Weitzel Gate, once part of the north portico of the neoclassical 1820 War Department Building, served as the original northern-most gateway to the Arlington National Cemetery from 1879 to 1971. As proposed, the reassembled columns constructed from the conserved original Aquia Creek sandstone drums match the 1879 height and configuration of the gate. The Historic American Buildings Survey (HABS) measured and recorded the gate stones in 1999 and produced drawings of the gateway. We are using that documentation to guide the reassembly. The column shafts stood 35 feet tall and rested on 8.5 feet high piers with flanking solid masonry wing walls approximately 21 feet in length. When originally installed, the columns stood 16 feet apart, allowing them to relate to each other as a pair. The reassembled columns match the spacing of the original gate. The location of the reassembled gate sets back approximately 30 feet from Ord and Weitzel Drive; perpendicular to and near their original location. In the new location, the columns serve as a new pedestrian gate marking the north end of Custis Walk, a path from the boundary to Arlington House.

As part of the rehabilitation of the gateway area we propose constructing a single-story 15-foot x 12-foot security guard house with a hipped roof and an eight-foot roof overhang. It sits inside the cemetery, south of the existing boundary wall and east of the vehicular and pedestrian entries to avoid interrupting views of the reassembled columns. Red sandstone matching the existing cemetery boundary wall clads the guard house. Dark-colored aluminum wall panels, aluminum storefront windows and doors, tinted glass, and a grey synthetic slate roof finish the exterior.

In the 1970s when ANC expanded east of former Alexandria to Georgetown Pike, administrators converted the road to a pedestrian path. The path created an extension of original Custis Walk between Arlington House and the former Sheridan Gateway. The 1970 extension of Custis Walk was paved with asphalt. We propose removing the asphalt and replacing it with scored concrete to match the rest of Custis Walk. The concrete path extends across north Ord and Weitzel Drive to join with an entrance plaza at the guard house. The plaza includes benches, a drinking fountain, and waste receptacles. The plaza is adjacent to the existing vehicular entry and the cemetery's red sandstone boundary wall.

Landscape work includes removal of various damaged trees and shrubbery and installation of new plantings.



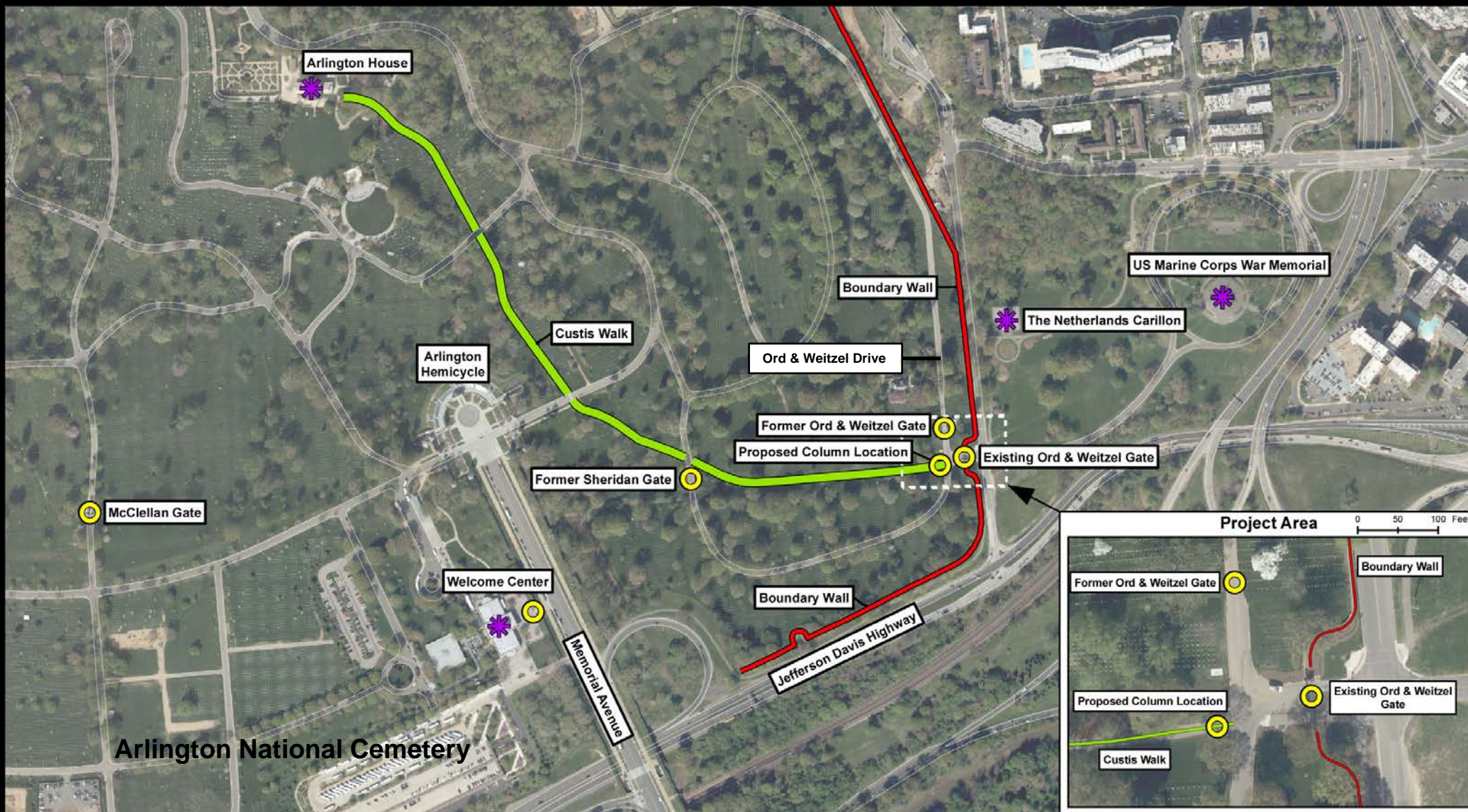
Project Context

- Gateway
- Landmark Feature
- Custis Walk
- Boundary Wall

2015 Aerial Orthoimagery



0 500 Feet





*Proposed Site Plan for
Ord and Weitzel
Gateway Project Area*

AREA OF POTENTIAL EFFECTS

AREA OF POTENTIAL EFFECTS

The Area of Potential Effects (APE) for the proposed rehabilitation of the Ord and Weitzel Gateway and reassemble of the column gates is shown on the satellite image to the left. The APE includes the project limits of disturbance and the surrounding areas from which one may see the columns and the new guard house. Mature vegetation, including numerous large trees, surround and screen much of the project area. The APE accounts for direct and indirect effects resulting from construction and permanent project features.

NATIONAL REGISTER PROPERTIES IN THE APE

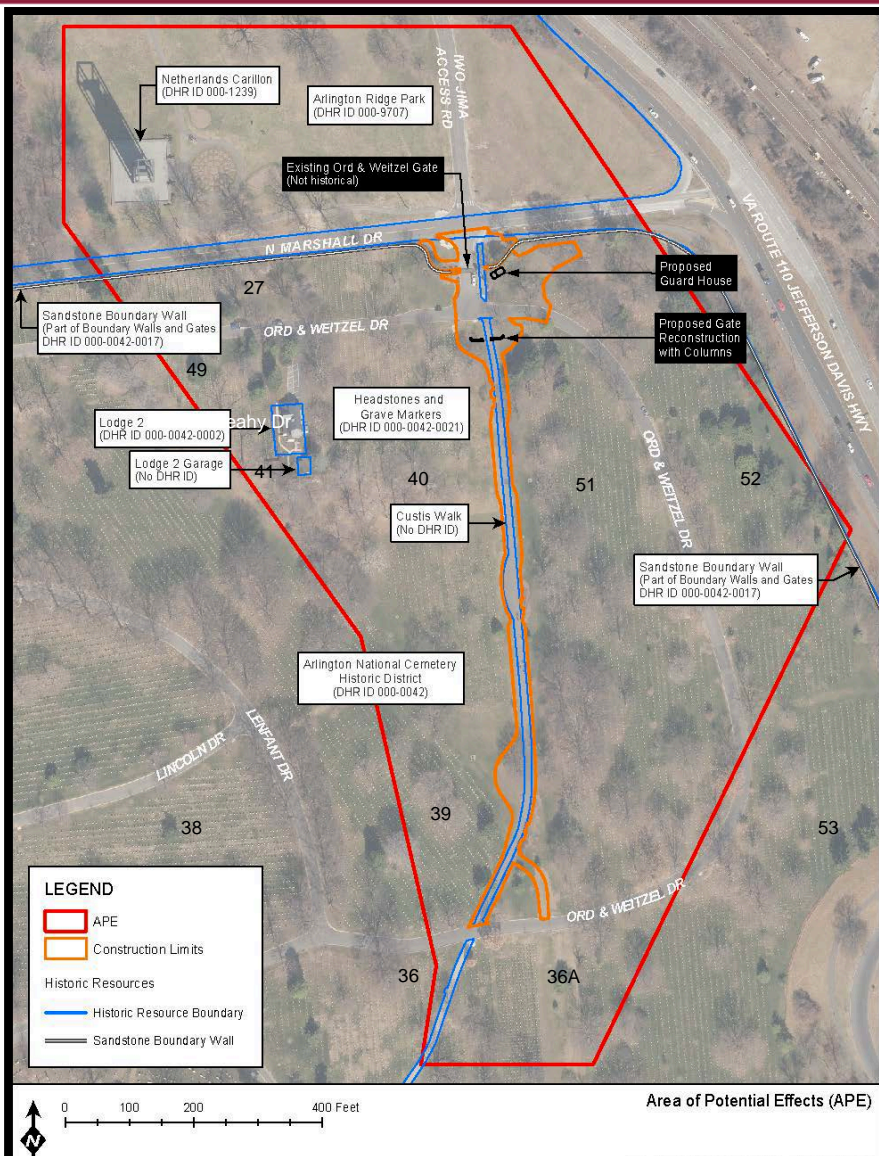
The historic properties in the APE's which contribute to Arlington National Cemetery's National Register (NR) District (DHR #000-0042) are:

- Sandstone Boundary Wall (DHR # 000-0042-0017)
- Lodge 2 (DHR # 000-0042-0002)
- Lodge 2 Garage (no DHR #)
- Headstones and Grave Markers (DHR #000-0042-0021)
- Custis Walk (no DHR #)
- Burial Sections 27, 36, 36A, 38, 39, 40 41, 49, 51, and 52 (DHR #)

The historic properties in the APE's which contribute to Arlington Ridge Park National Register District (DHR #000-9707) are:

- Netherlands Carillon (DHR # 000-1239)

*Satellite View of
Project Area with
APE outlined in red.*



DETERMINATION OF EFFECTS

DETERMINATION OF EFFECTS

I assessed the effects of the proposed project using criteria defined in 36 CFR 800.5 “Assessment of adverse effects” and determined the undertaking will have **no adverse effect** on the characteristics which qualify Arlington National Cemetery’s and Arlington Ridge Park’s historic districts for inclusion on the National Register of Historic Places.

ANC retains its historic views and vistas within the cemetery after construction of the proposed project. The historic location and elements within the districts are maintained. The historic boundary wall as well as headstones and circulation patterns remain unchanged. The cemetery continues to convey its historic significance as a military cemetery and in the areas landscape architecture, and architecture. There are no changes to the integrity of feeling or association. The proposed project will have no affect on the integrity of location, workmanship, feeling, or association of ANC’s National Register district.

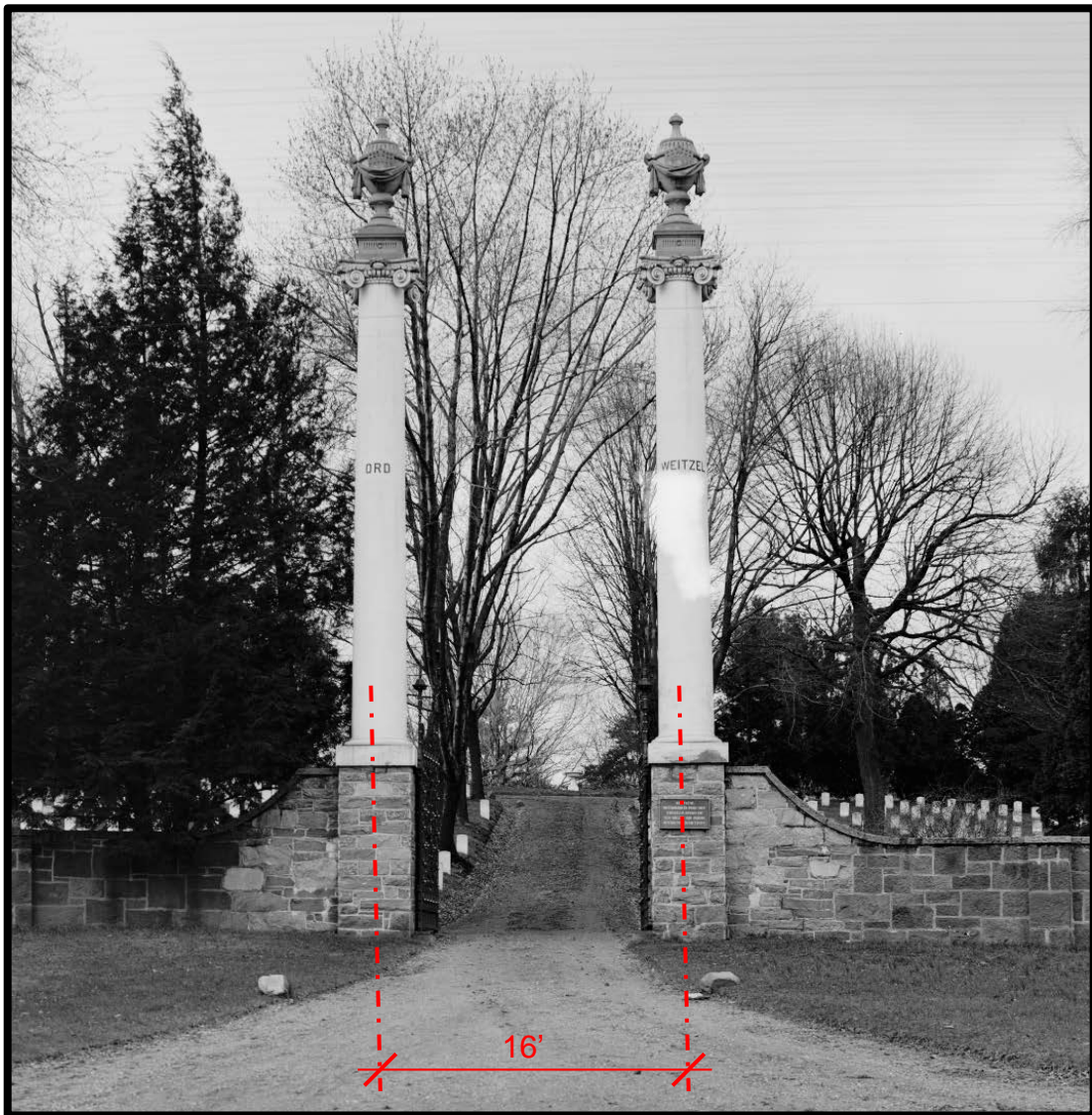
Arlington Ridge Park National Register district is north of the project area. A portion of the park is within the APE. From Arlington Ridge Park, the current non-historic security gate is visible and the replacement gate also will be visible. However, this change has no affect the current character of the park. The reassembled Ord and Weitzel columns are visible from the top of the Netherlands Carillon and from the southern portion of the park; more so during winter months when leaves fall from surrounding trees and other plant materials are not in bloom. The new guardhouse is partially visible from the park, although the boundary wall and vegetation screens much of the building. The addition will not adversely affect the character-defining features of Arlington Ridge Park. Other proposed project features such as the plaza, path, are benches are unseen from Arlington Ridge Park. The proposed project will not adversely affect its integrity of location, design, setting, feeling, materials, workmanship, and association.

The project will have no effect on archeological sites. The work is in an area with severe ground disturbance.

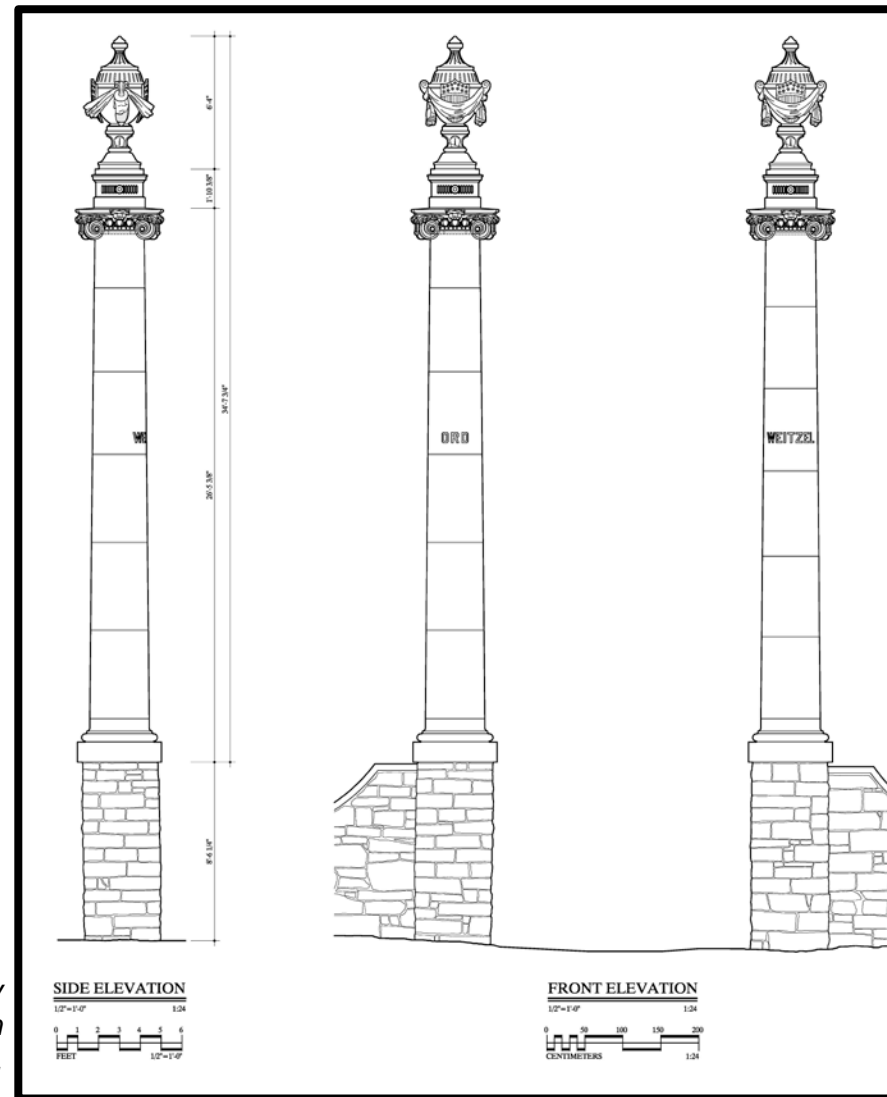
All work adheres to the Secretary of the Interior’s Standards for the Treatment of Historic Properties. The project team selected materials and sited elements in a manner that avoids effects. I find the design avoids and/ or minimizes the direct, indirect, and cumulative effects to above- and below-ground historic properties and contributing elements in Arlington National Cemetery and Arlington Ridge Park National Register districts.

Rebecca L. Stevens
Cultural Resources Manager
Arlington National Cemetery

ORIGINAL LOCATION & APPEARANCE OF THE GATEWAY



Original site of the Ord and Weitzel Gateway from the former Alexandria to Georgetown Pike looking west up Ord and Weitzel Drive. The 16 feet clearance between the piers is too narrow for modern vehicles to pass through safely.

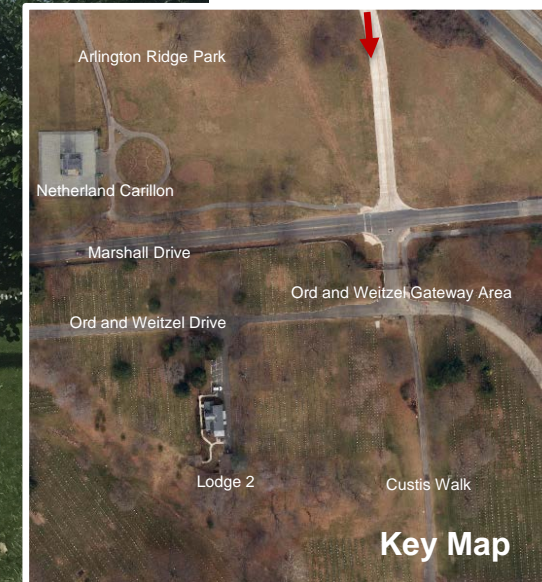


Elevation drawings by the Historic American Building Survey.

VIEWS INTO THE AREA OF POTENTIAL EFFECTS



Existing view towards the Ord and Weitzel Gateway area looking south from Arlington Ridge Park. Note the dense vegetation. Arrow indicates location of proposed guard house. Rectangle represent the location of the reassembled columns.





Existing conditions and view of the Ord and Weitzel Gateway area looking south from Marshall Drive outside the cemetery. Arrow indicates location of proposed guard house. Rectangle represents location of the reassembled columns.





Illustration of the Ord and Weitzel Gateway after construction. View from Marshall Drive looking south into the cemetery.



Key Map



Conditions and view of the existing Ord and Weitzel Gateway area from Custis Walk looking north. Arrow indicates location of proposed guard house. Rectangle represents location of the reassembled columns.



VIEWS INTO THE AREA OF POTENTIAL EFFECTS



Existing conditions and view towards the Ord and Weitzel Gateway area looking north along Custis Walk. Note the dense background vegetation. Arrow indicates location of proposed guard house. Rectangle represent the location of the reassembled columns.





Illustration of the Ord and Weitzel Gateway area after construction looking north along Custis walk. Image illustrates the reassembled columns, guard house, concrete path, and plantings.





Existing conditions and view towards the Ord and Weitzel Gateway area looking west from Burial Section 52. Arrow indicates location of proposed guard house. Rectangle represents location of the reassembled columns.



Existing conditions and view towards the Ord and Weitzel Gateway area looking northwest from east Ord and Weitzel Drive. Arrow indicates location of proposed guard house. Rectangle represents location of the reassembled columns.



Key Map

VIEWS INTO THE AREA OF POTENTIAL EFFECTS



Existing conditions and view towards the Ord and Weitzel Gateway area looking east from north Ord and Weitzel Drive. Arrow indicates location of proposed guard house. Rectangle represent the location of the reassembled columns.

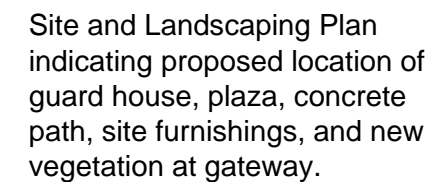


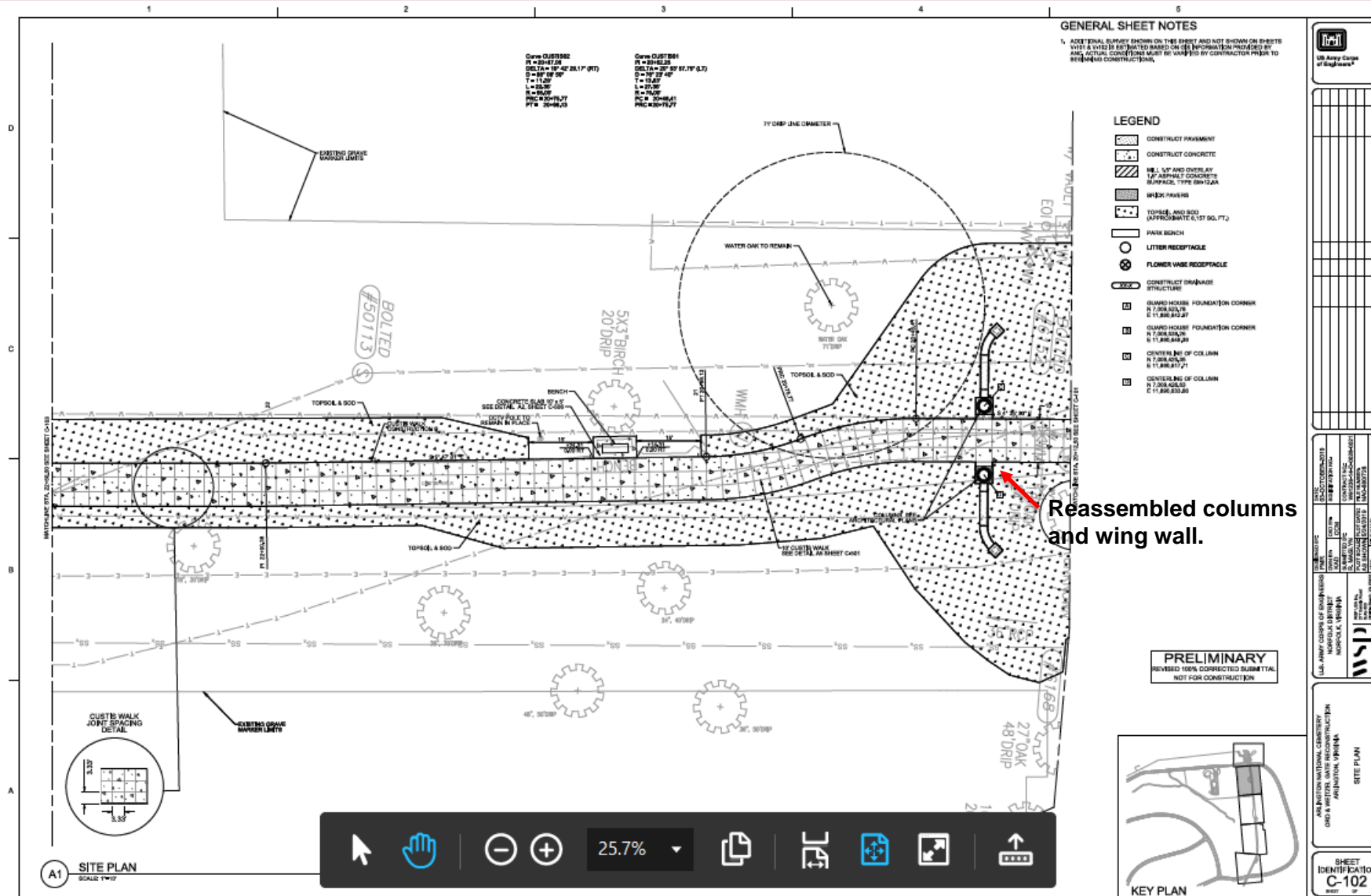


Custis Walk is scored concrete from the former Sheridan Gate at south Ord and Weitzel Drive to Arlington House. View to the west.

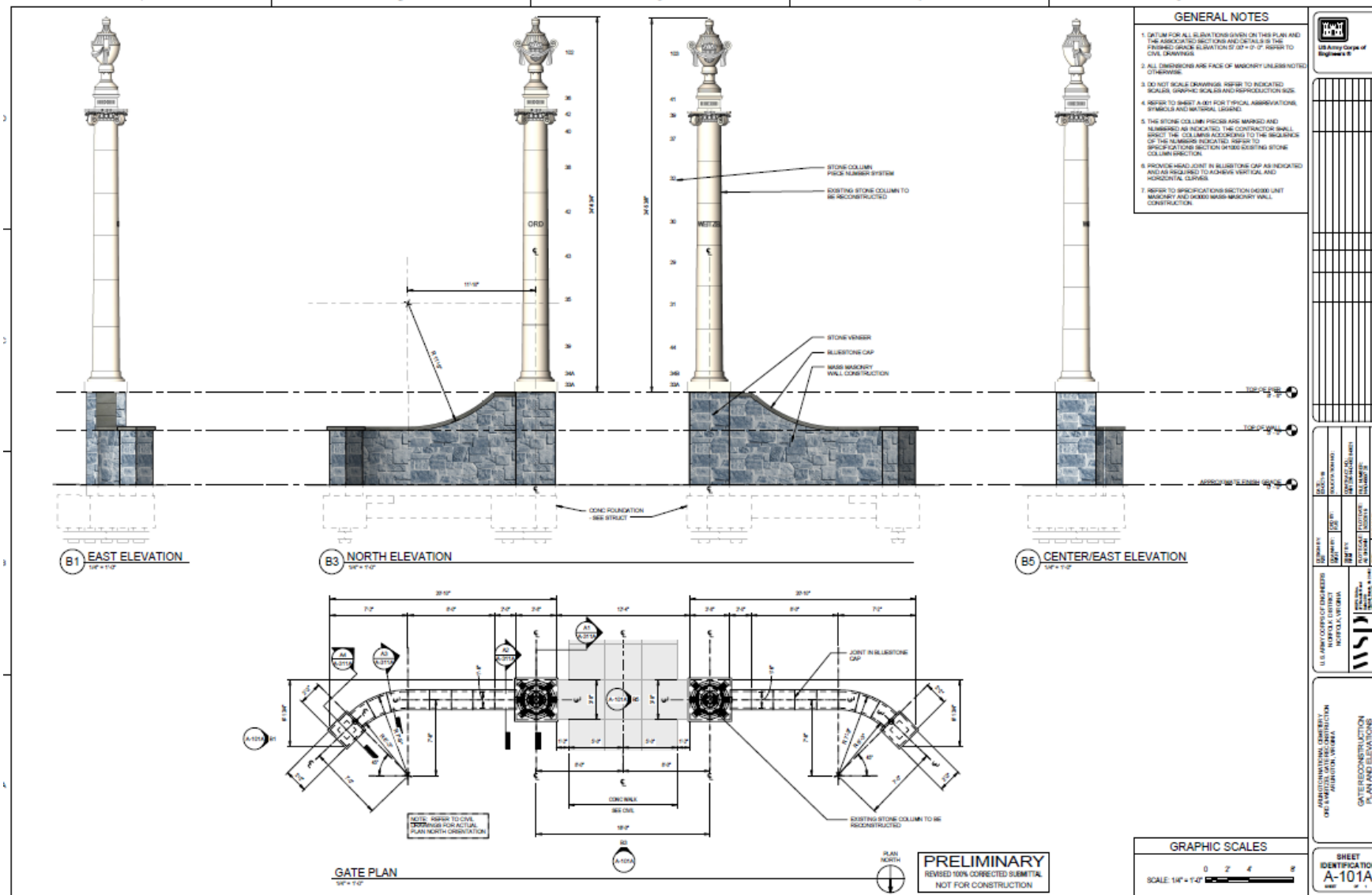


Since 1971 Custis Walk along the former Alexandria to Georgetown Pike is paved with asphalt. View is from the proposed location of the reassembled Ord and Weitzel Gate columns to the south down Custis Walk

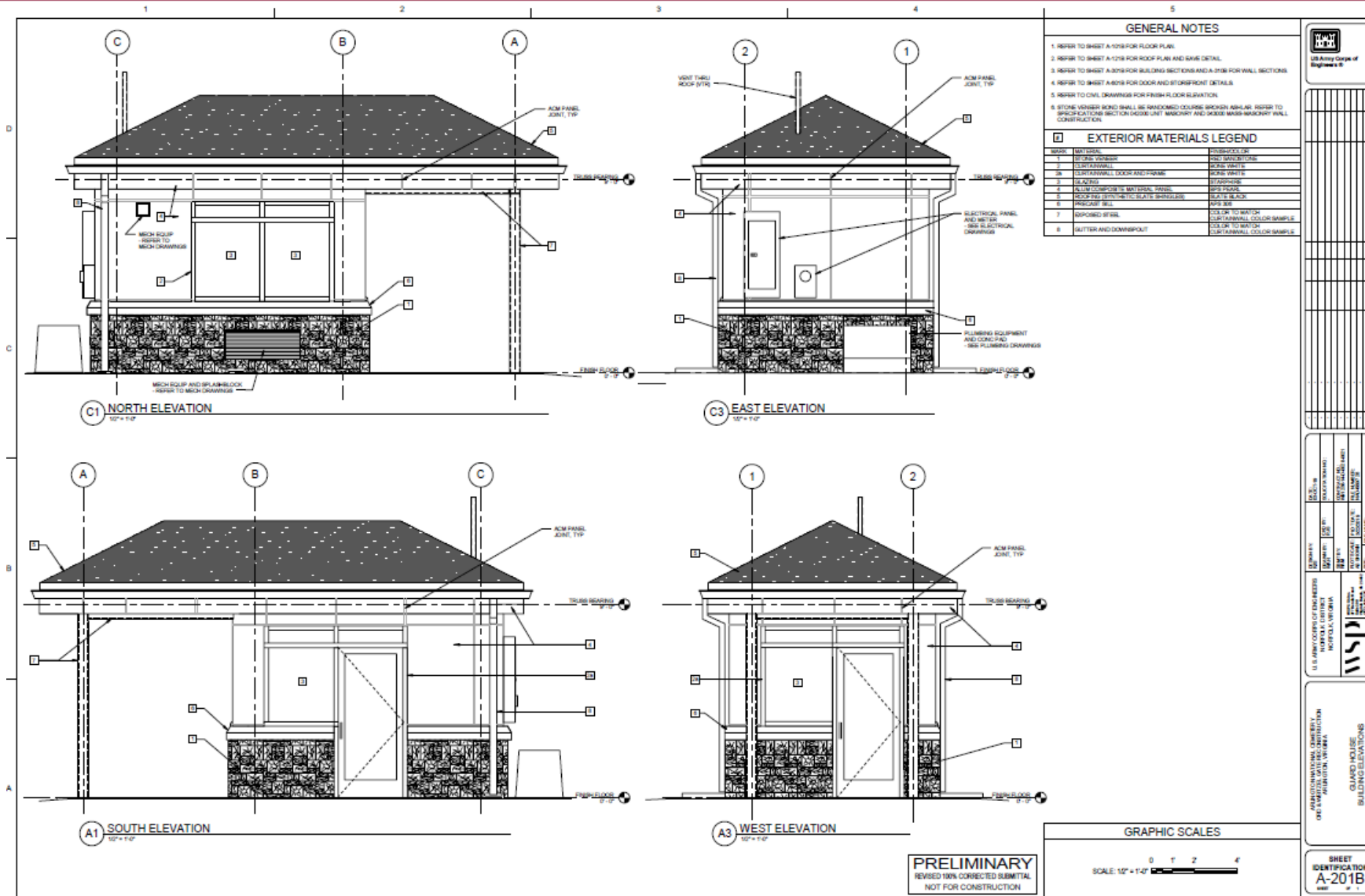




Site Plan indicating the proposed location of the reassembled Ord and Weitzel Gate columns and wing walls. Note Custis Walk with scored concrete.



Elevation and Plan of the proposed reassembled Ord and Weitzel Gate stone columns and wing walls. Column piers are concrete faced with stone. Wing walls and end piers are solid masonry.



Elevations of the proposed guard house. Red sandstone matching the existing cemetery boundary wall clads the guard house. Dark-colored aluminum wall panels, aluminum windows and doors, tinted glass, and a grey synthetic slate roof finish the exterior.