

9/11 Pentagon Memorial Visitor Education Center



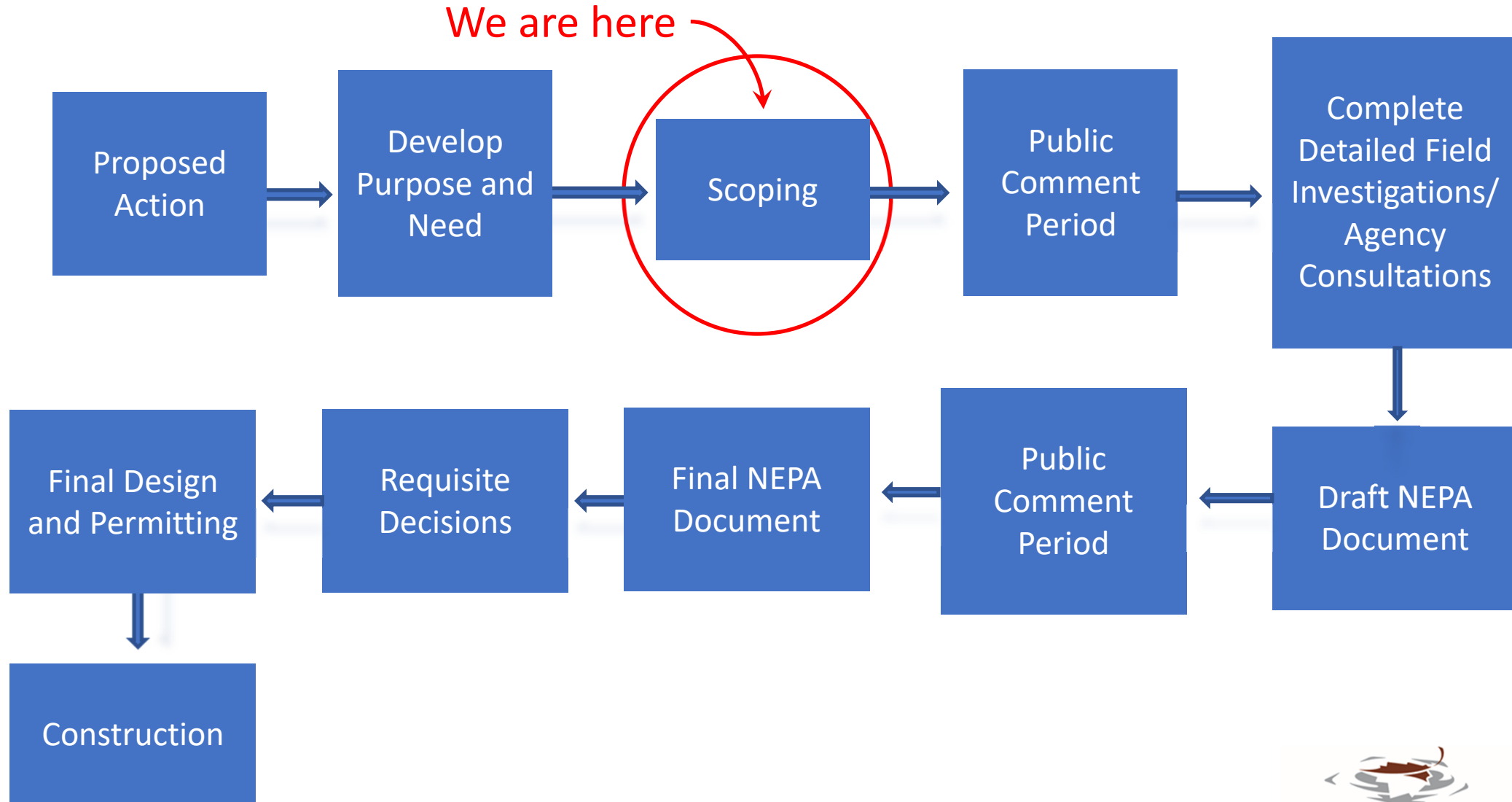
9/11 Pentagon Memorial Visitor Education Center

Project Overview: The Pentagon Memorial Fund proposes to construct a Visitor Education Center on the grounds of Arlington National Cemetery. While a memorial exists that honors the 184 lives that were lost as a result of the attack on the Pentagon, there is no Visitor Education Center that provides an understanding of the specific events of that day at the Pentagon, the lives lost during the tragic events, and the historic significance of the Pentagon Memorial Site.

Purpose: The purpose of the project is to construct and operate a Visitor Education Center (VEC) to support visitors of the Pentagon Memorial. In addition to various facilities, the proposed VEC will provide interactive exhibits and educational programs that will give visitors a sense of the broad impact of the tragedy from a variety of perspectives. Stories of the courage and resilient spirit demonstrated by Pentagon employees, first responders, and residents of the area will be shared throughout the exhibits.

Need: A facility is needed to support the Pentagon Memorial and educate visitors. In addition to providing details of the 184 individuals who lost their lives on 9/11 and interpretive displays discussing the symbolism of the memorial design, the VEC will offer a dedicated parking area, shelter, and permanent restrooms, which currently do not exist for visitors to the Pentagon Memorial, and a café, bookstore, and conference space. To achieve this and be financially sustainable, the building will require a site footprint of between 25,000 and 30,000 square feet to support a program area of between 46,500 and 50,000 square feet, and up to 136 parking spaces.

9/11 Pentagon Memorial Visitor Education Center NEPA Process

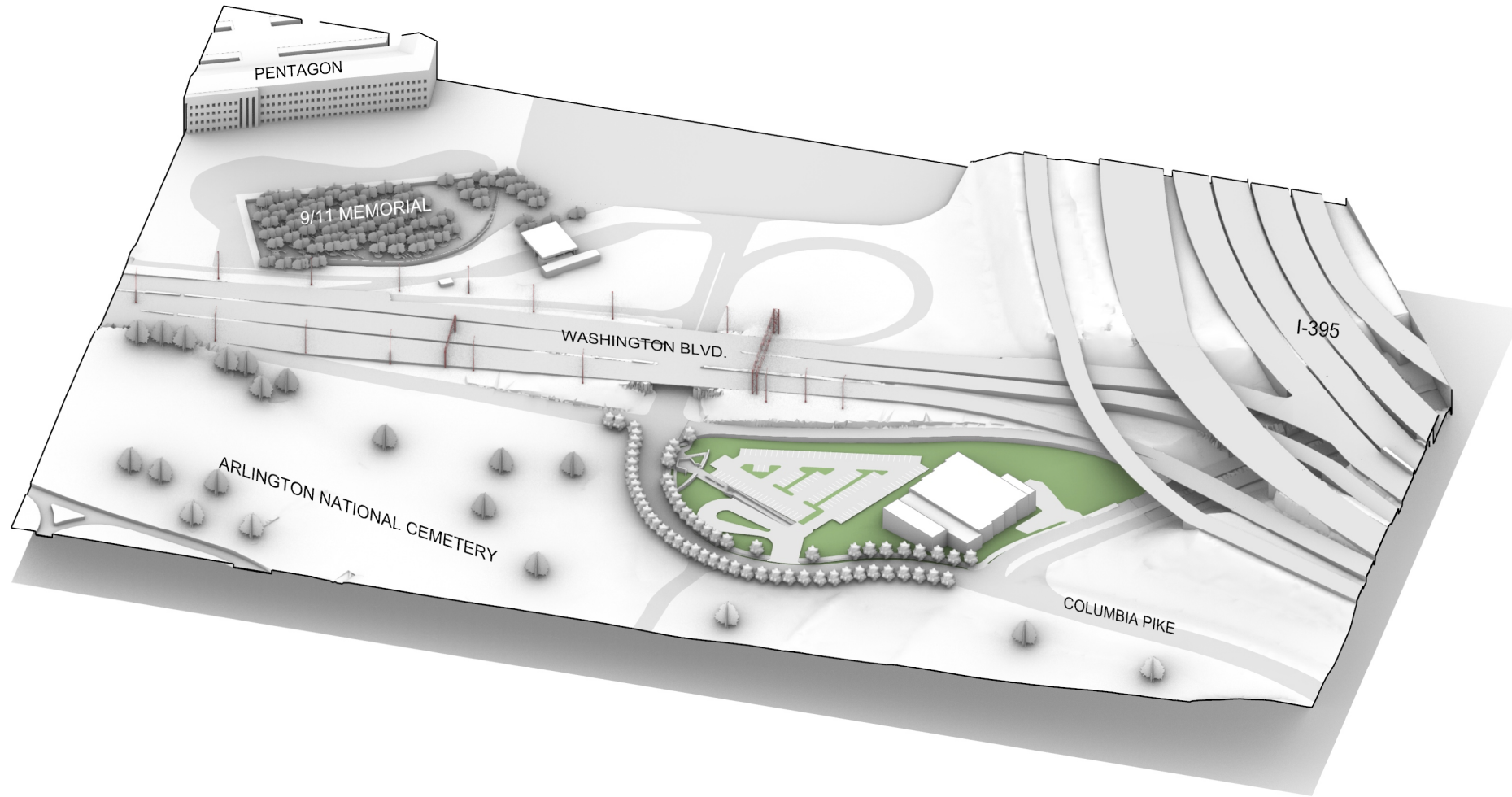


9/11 Pentagon Memorial Visitor Education Center

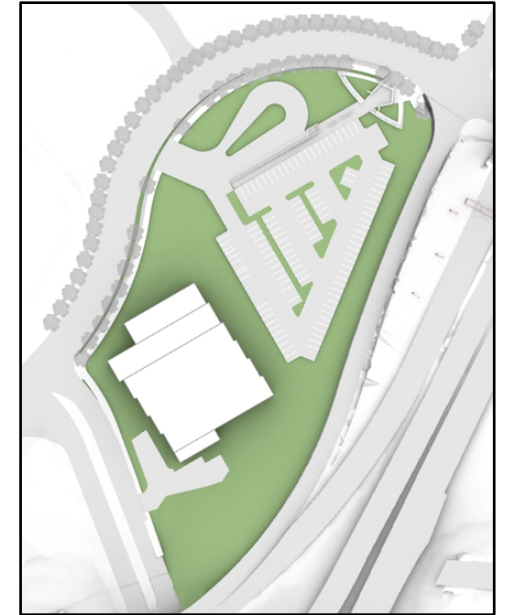


Configuration reflects completion of Defense Access Road Program improvements.

9/11 Pentagon Memorial Visitor Education Center



Concept 1



SCALE: 1" = 50'-0"

SITE FOOTPRINT - 28,830 SF

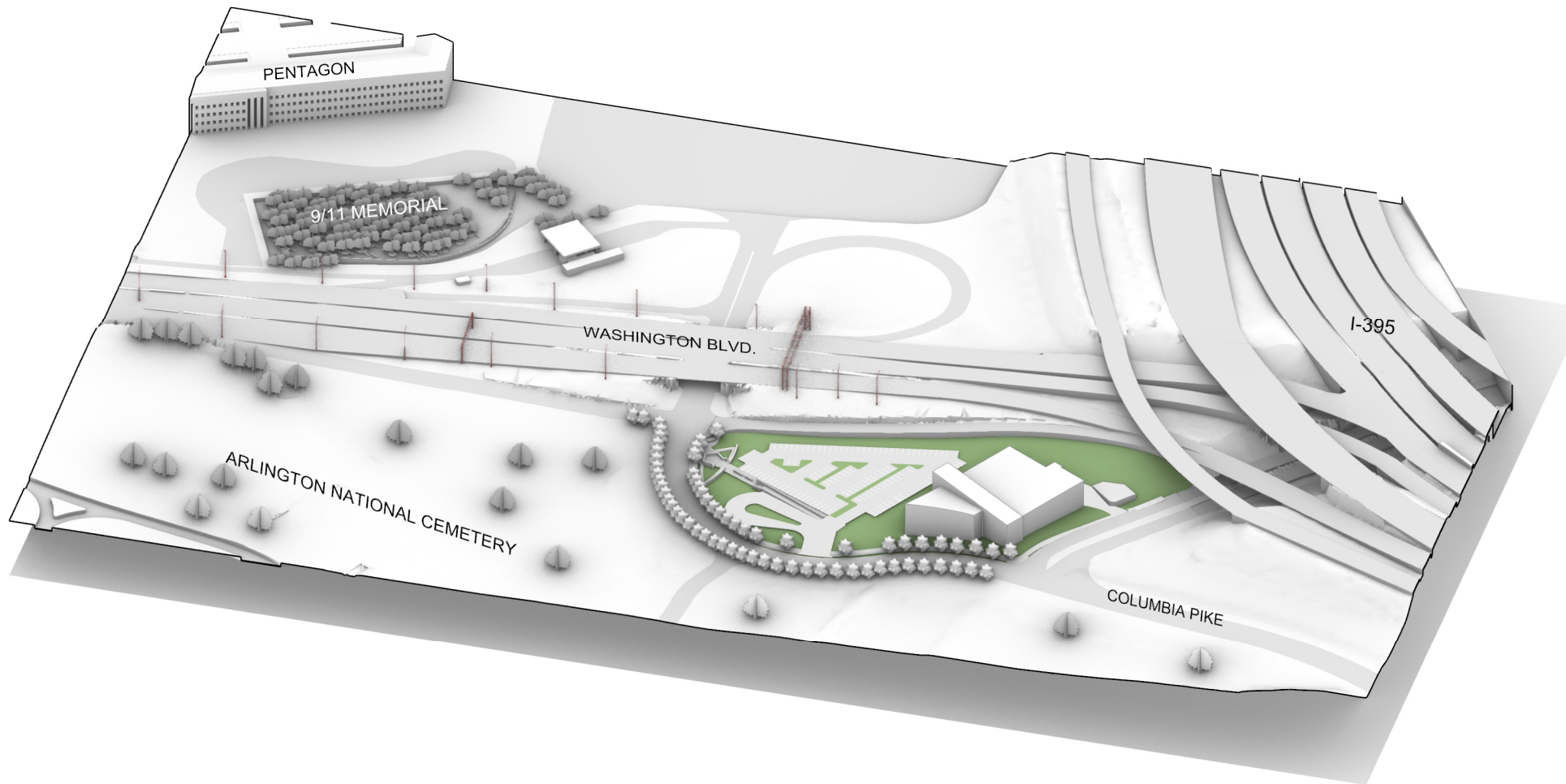
PROGRAM AREA - 46,690 SF

LEVELS - 2

PARKING (9'X18') - 136

Configuration reflects completion of Defense Access Road Program improvements.

9/11 Pentagon Memorial Visitor Education Center



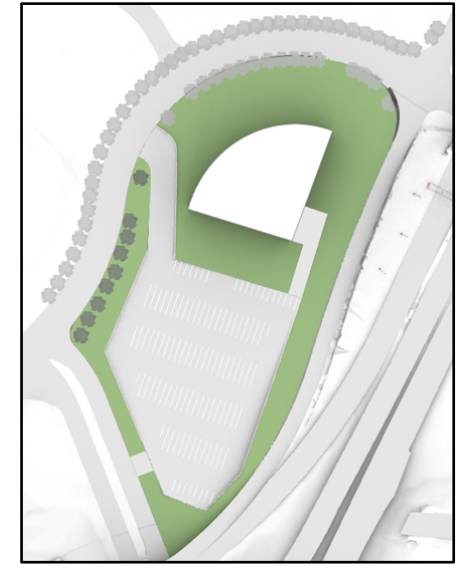
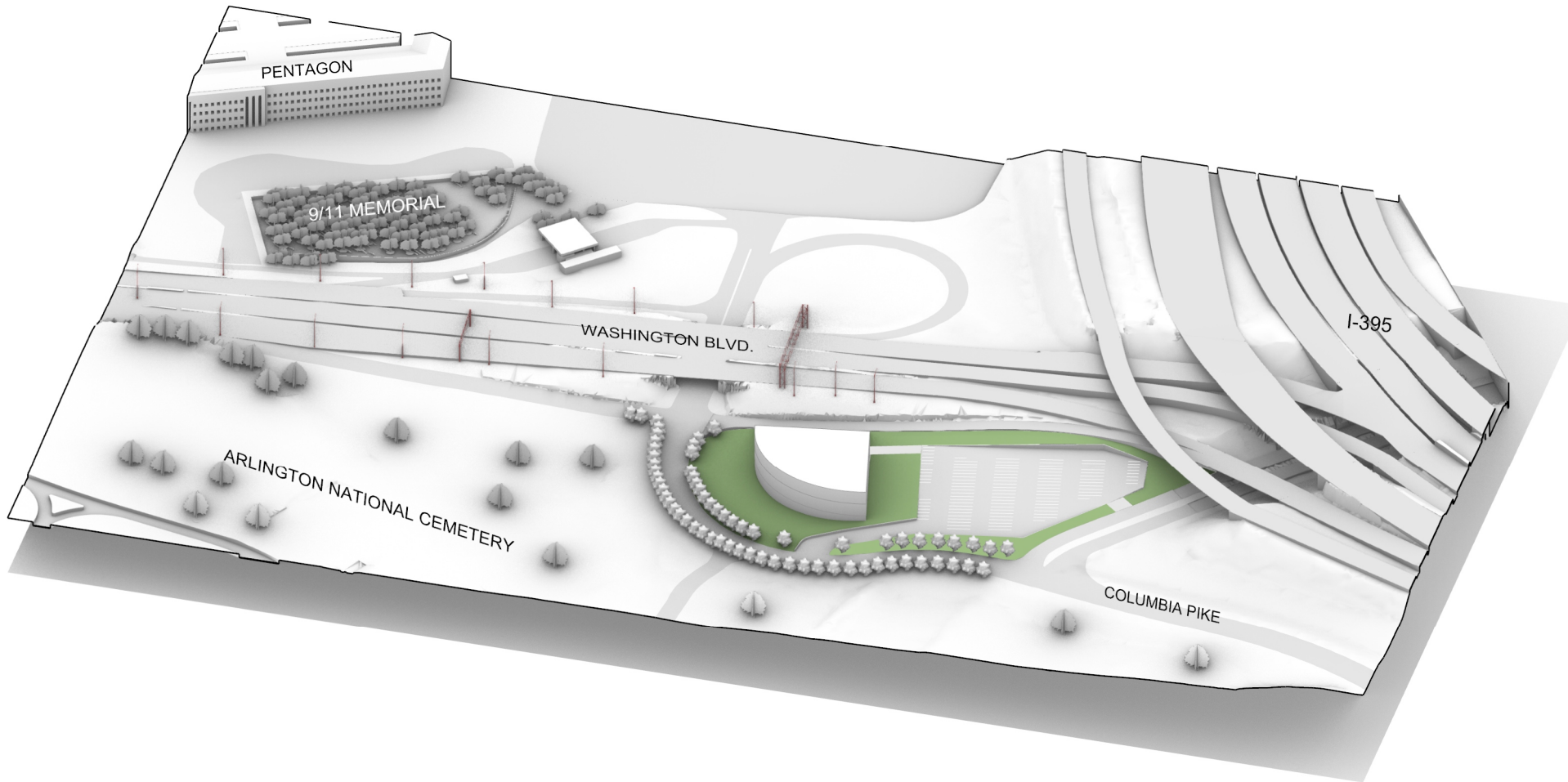
SCALE: 1" = 50'-0"

SITE FOOTPRINT - 29,960 SF
PROGRAM AREA - 49,840 SF
LEVELS - 3
PARKING (9'X18') - 136

Concept 2

Configuration reflects completion of Defense Access Road Program improvements.

9/11 Pentagon Memorial Visitor Education Center



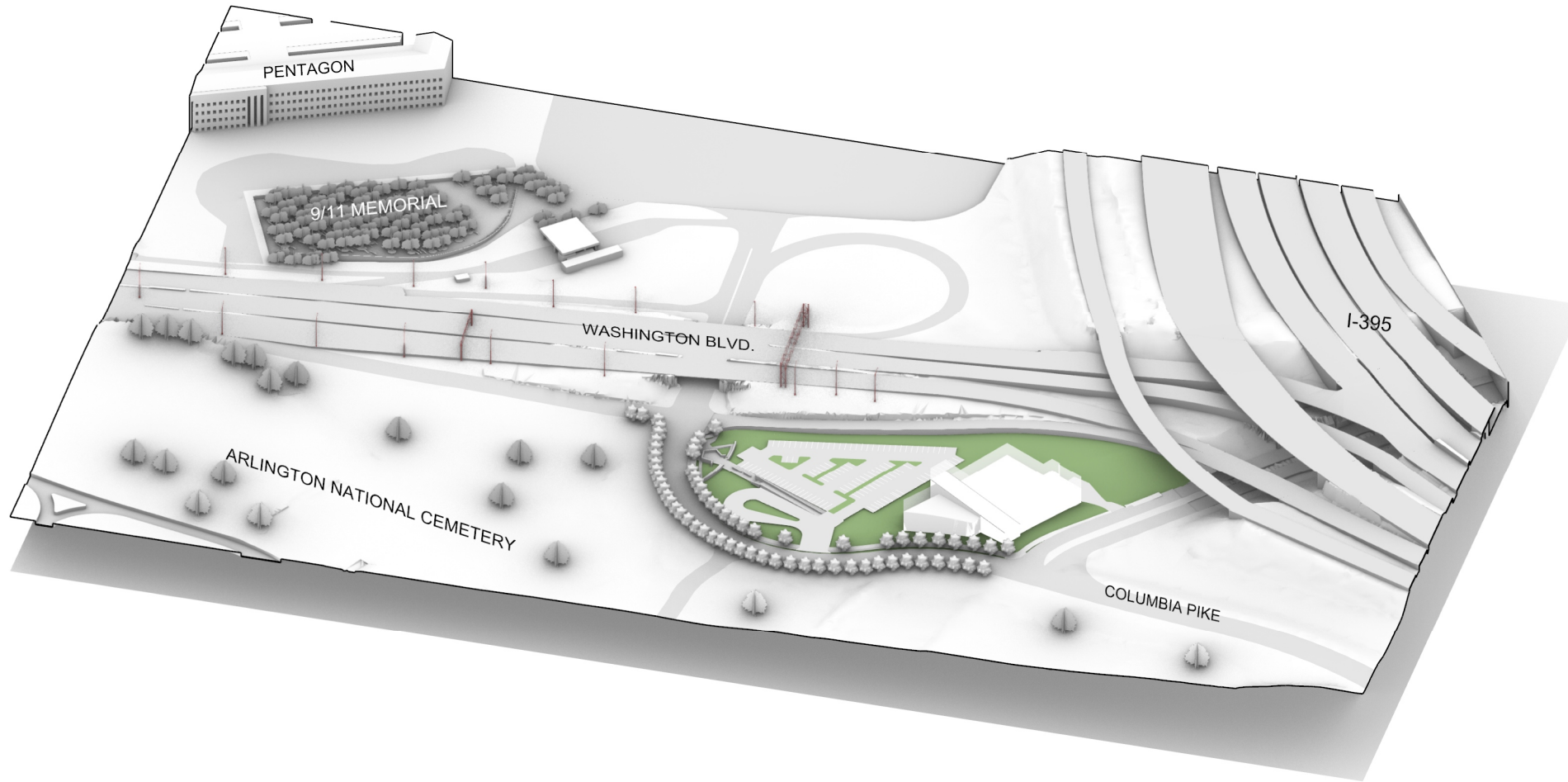
SCALE: 1" = 50'-0"

SITE FOOTPRINT - 25,373 SF
PROGRAM AREA - 49,840 SF
LEVELS - 3
PARKING (9'X18') - 136

Concept 3

Configuration reflects completion of Defense Access Road Program improvements.

9/11 Pentagon Memorial Visitor Education Center



SCALE: 1" = 50'-0"

SITE FOOTPRINT - 27,852 SF
PROGRAM AREA - 49,840 SF
LEVELS - 2 + BASEMENT
PARKING (9'X18') - 136

Concept 4

Configuration reflects completion of Defense Access Road Program improvements.