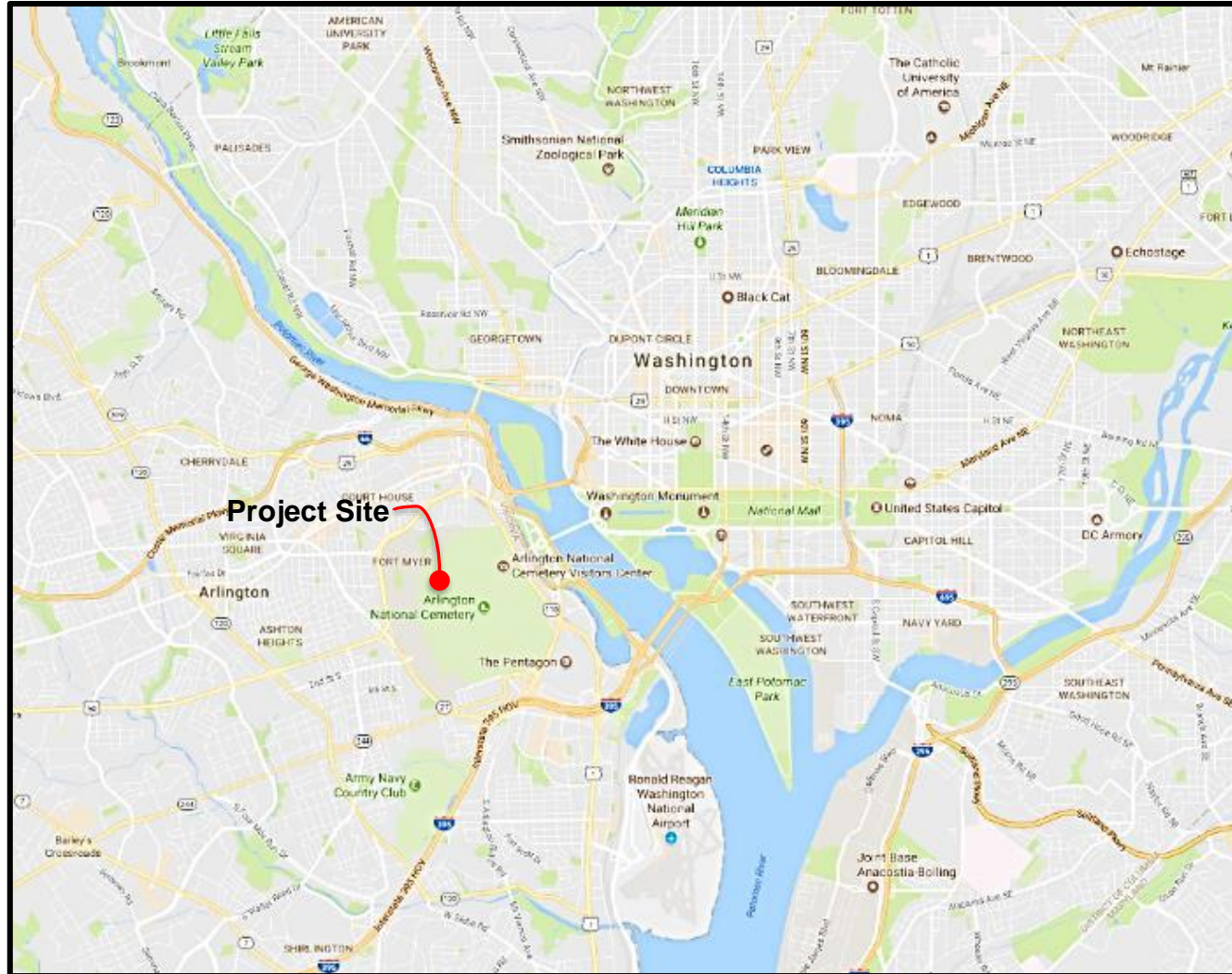


JOHN F. KENNEDY BURIAL SITE WALKWAY REPLACEMENT



JOHN F. KENNEDY BURIAL SITE WALKWAY REPLACEMENT Arlington National Cemetery Arlington, Virginia

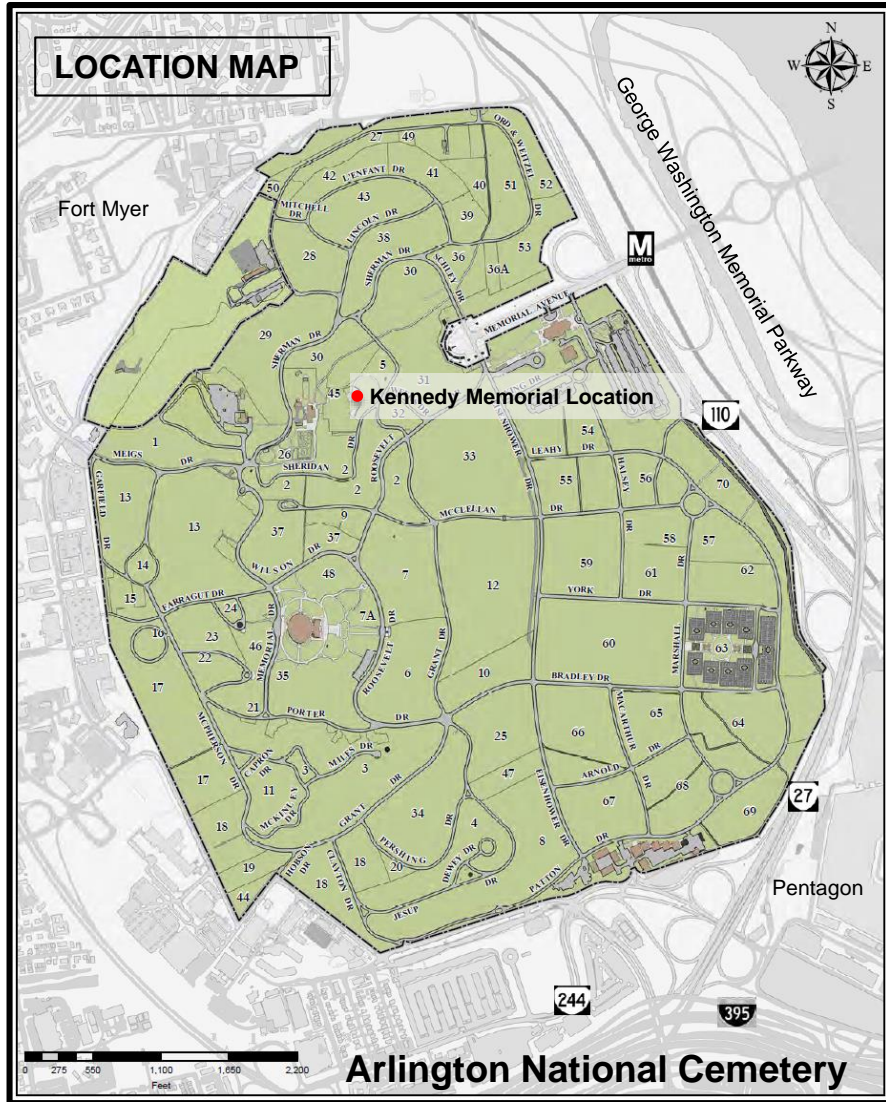
PROJECT DESCRIPTION, AREA OF POTENTIAL EFFECTS, and ASSESSMENT OF EFFECTS

ANC Project Point of Contact:

Caitlin Smith

Cultural Resources Program Manager

June 3, 2022



PROJECT DESCRIPTION

Arlington National Cemetery (ANC) proposes removing a flagstone walkway north of the President John F. Kennedy Memorial grave terrace and replacing it with a flame-finished granite walkway. The new walkway will follow the same footprint as the walkway it replaces. Installed decades ago as a more accessible route to the grave terrace, the existing 3.5 feet wide by 135 feet long flagstone path is in disrepair. The pavers are not level or smooth, and no mortar or sealant remains between the pavers. Furthermore, the flagstone is not compatible with the design of the historic JFK memorial. The 6 foot wide replacement walkway is designed to better match the memorial materials, by changing the flagstone to Deer Isle granite. The granite pavers will be placed using the same pattern used along the formal approaches to the Kennedy Memorial.

To minimize changes to the historic memorial and landscape, the new walkway follows the footprint of the flagstone walkway. This means the walkway will not be ABA compliant. To be ABA compliant, the footprint would need to shift to accommodate the slope requirements, trees would have to be relocated, the walkway would become a ramp with curbs and railings, and the memorial's historic northern walkway would need to be significantly modified to create a level landing transition to the new ramp. A drain system is proposed at the bottom of the walkway; the drain will match existing drains located on the memorial walkways.

The project also requires removal of a two foot section of granite curb at the east entrance of the walkway, and removal of a four foot section of hedge at the south end the walkway to accommodate the six and a half foot width of the entryway. The new ramp could be removed and the landscape restored at a future date. To mitigate damage to the original Warnecke-designed memorial, ANC proposes removing, salvaging, and storing original material, and replacing it with new elements constructed of the same materials.

There are 17 steps between the memorial's entry at Sheridan Drive and the grave terrace. The proposed walkway bypasses the steps to the burial terrace, providing a more accessible pathway. The proposed project allows ANC to improve the design and maintenance of an existing walkway, while also preserving the modern landscape architecture of the Memorial as designed by John Carl Warnecke, and the trees that are an important component of the Rachel Lambert Mellon-designed landscape.



Area of Potential Effects:

The Area of Potential Effects (APE) for the proposed project is shown on the map to the left as a yellow oval. The APE includes locations where the project may be visible and/or audible. The project involves ground disturbing activities in previously disturbed areas.

The project area is located in Arlington National Cemetery Historic District (Virginia Department of Historic Resources [VDHR] #000-0042).

Historic Properties Located Within the APE:

Following is a list of historic structures and features contributing to Arlington National Cemetery's and Arlington House's historic districts, which are located within/adjacent to the APE.

- Arlington National Cemetery Historic District (DHR #000-0042)
- Kennedy Gravesites (DHR # 000-0042-0033)
- Arlington House (DHR # 000-0001)
- Mary Randolph Gravesite (no DHR #)
- Custis Walk (no DHR #)
- Headstones and Grave Markers (DHR #000-0042-0021)
- Burial Sections 2, 5, 30, 31, 32, and 45

Satellite View of Project Area.

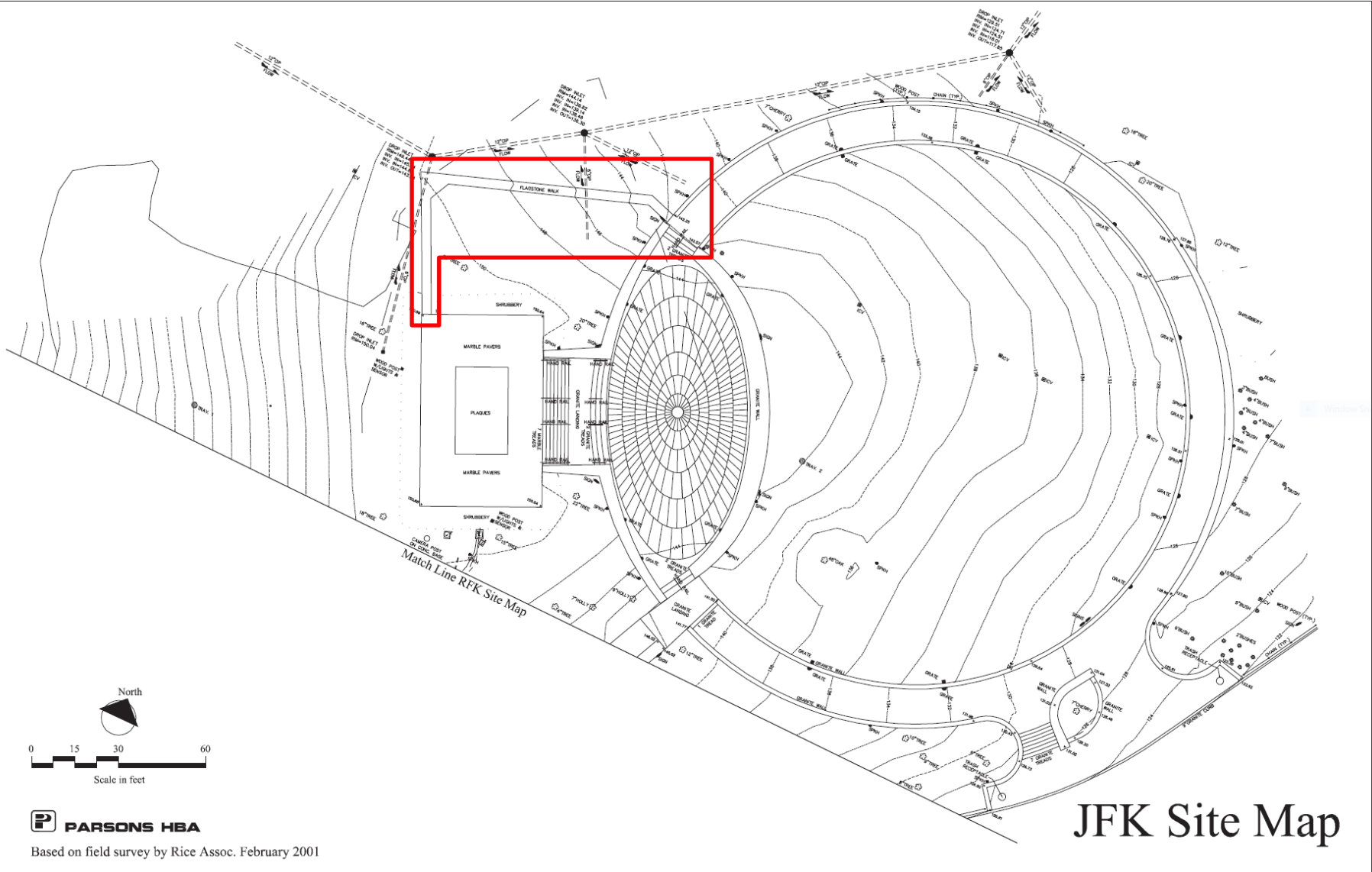
APE outlined in yellow.

Proposed project location in red.



EXISTING PLAN

The boundary of the proposed project area is outlined on the map to the left in red.

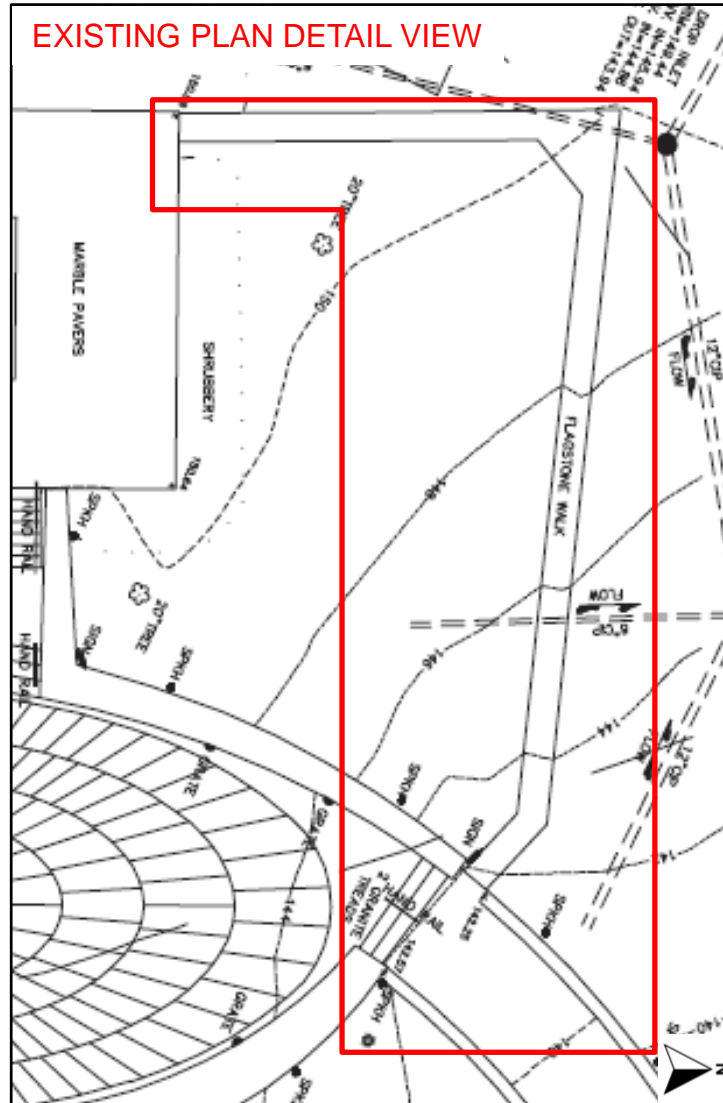


PARSONS HBA

Based on field survey by Rice Assoc. February 2001

EXISTING PLAN

EXISTING PLAN DETAIL VIEW



The boundary of the project area is outlined on the map in red.

DETERMINATION OF EFFECTS

I assessed the effects of the proposed project. Applying the criteria of adverse effects (36 C.F.R. § 800.5[a][1]), I determined the undertaking will have **no adverse effect** on the characteristics which qualify Arlington National Cemetery and Arlington House historic district for inclusion on the National Register of Historic Places.

ANC retains the historic views and vistas within the cemetery after construction of the proposed project. The historic location and elements within the district are maintained. Headstones and circulation patterns remain unchanged. The cemetery continues to convey its historic significance as a military cemetery, and for its landscape architecture and architecture. The project removes one non-historic feature to replace it with another non-historic feature. The new ramp could be removed and the landscape restored at a future date. To mitigate damage to the original Warnecke-designed memorial, ANC proposes removing, salvaging, and storing original material, and replacing it with new elements constructed of the same materials (Deer Isle granite). Otherwise, there are no changes to the integrity of location, workmanship, feeling or associations of ANC's National Register district.

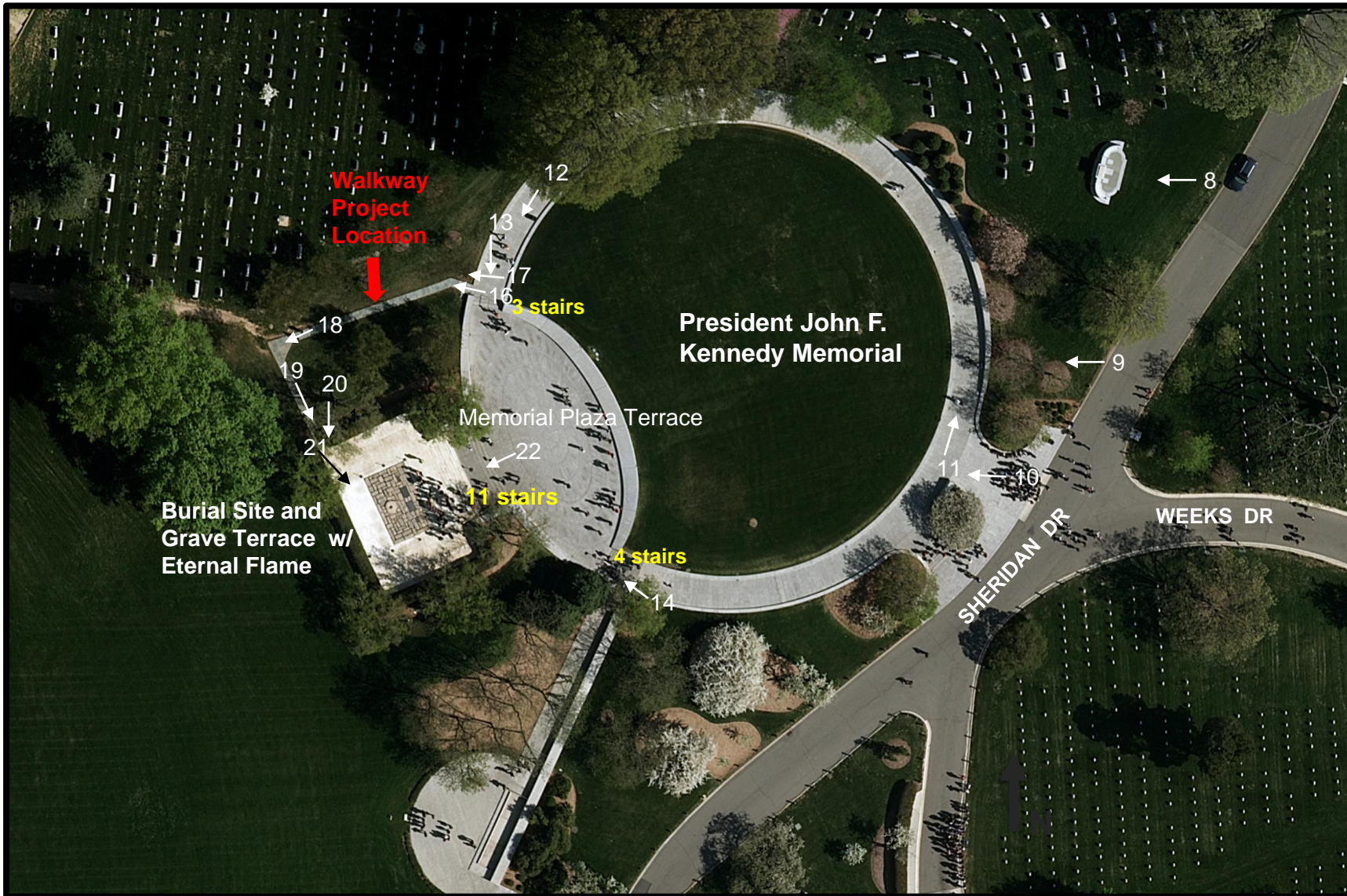
Arlington House (The Robert E. Lee Memorial) National Register Historic District is west of the project area. From the house and hillside, the proposed walkway is not completely visible. However, the walkway is visible from the Mary Randolph gravesite and the Custis Walk, which both contribute to ANC's historic district. The walkway is more apparent during winter months when leaves fall from surrounding trees and other plants are not in bloom. However, this change has no effect on the character of the two historic districts.

The proposed undertaking would have **no adverse effect to archaeological resources**. All construction would be located in areas of the APE that have been surveyed and found not to contain archaeological resources and/or have been disturbed through prior development of the cemetery or adjacent infrastructure (reference "Archaeological Potential & Past Ground Disturbance Map from Attachment D, Application of National Register of Historic Places Criteria".) It is not expected that undiscovered cultural resources would be found during implementation of the undertaking. However, in the event of an unanticipated discovery during ground-disturbing activities, all work would cease, and the ANC Cultural Resources Manager (CRM) would be contacted. The CRM would immediately notify the Virginia Department of Historic Resources and other appropriate agencies, and standard procedures would be followed to protect the artifacts and determine their significance.

All work adheres to the Secretary of the Interior's Standards for the Treatment of Historic Properties. The project team selected materials and sited the walkway in a pre-existing path location to avoid and minimize effects. To further mitigate the project's effects, ANC proposes utilizing materials that match the memorial's historic construction (Deer Isle granite). Original components of the historic memorial will be salvaged, inventoried, and stored. I find the design avoids and/or minimizes the direct, indirect, and cumulative effects to above- and below-ground historic properties and contributing elements in Arlington National Cemetery and Arlington House districts.

Caitlin Smith, AIC PA
Cultural Resources Manager
Arlington National Cemetery

SITE PLAN & VIEWS



The President John F. Kennedy Memorial is adjacent to Sheridan and Weeks Drives in Section 45 of the Cemetery. The proposed project location is on the northwest side of the President Kennedy grave terrace and eternal flame.

The memorial site takes advantage of the natural topography by nestling the circular walkway in the hillside, leading up to the plaza terrace with its views out to the National Mall. As a result, the northwest walkway and stairs are not visible from most directions. They are best viewed from the north walkway itself, looking south. Similarly, the current flagstone ramp is tucked in the hillside and not visible from the south or west. It is most visible from Custis Walk and the Mary Randolph gravesite from the north. The flagstone ramp is also shielded by trees to the north, west, and east, further obscuring its location.

Key:

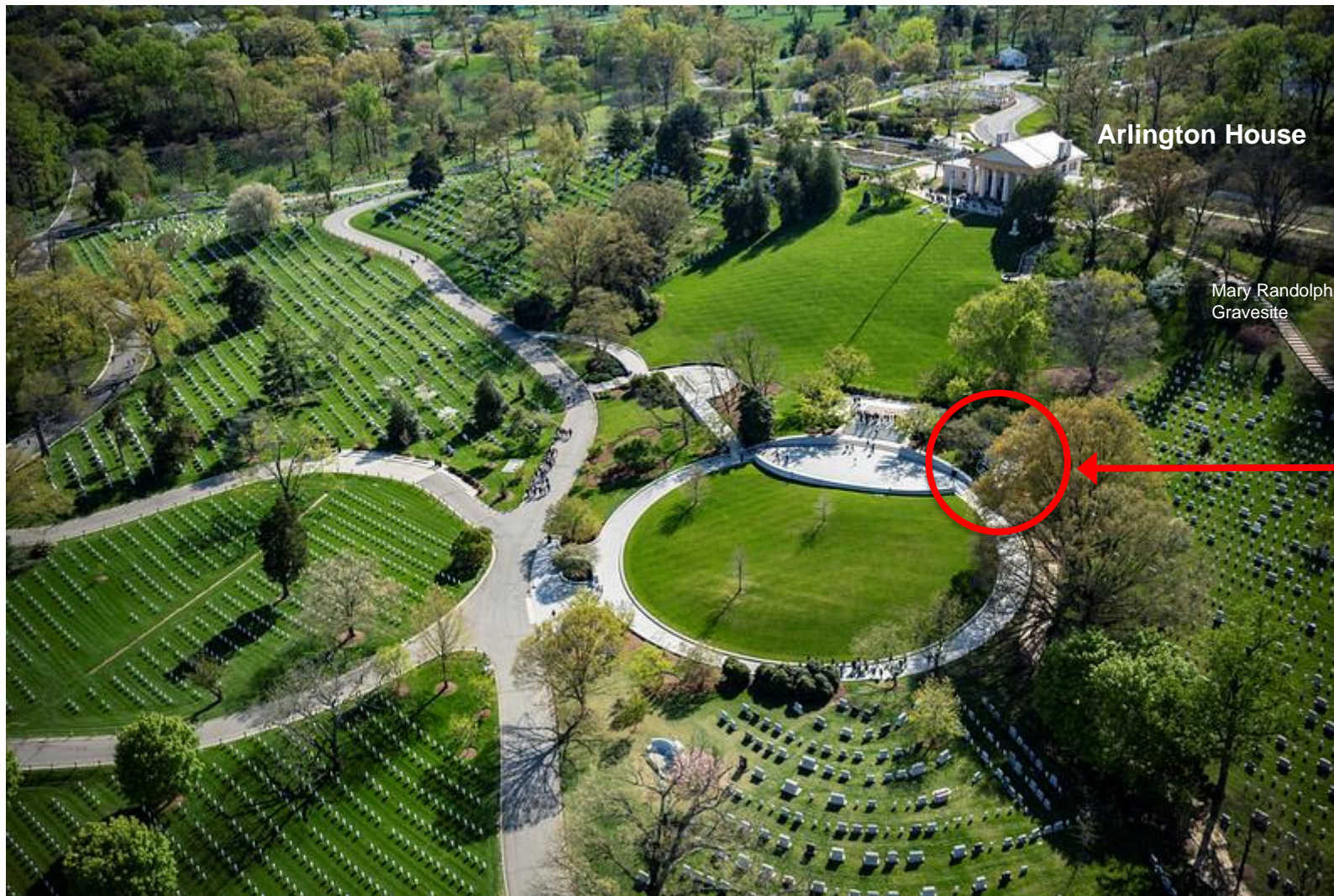
→ Direction and number of Photograph on following pages.

The President John F. Kennedy
Memorial Gravesite
area is outlined in **yellow**.

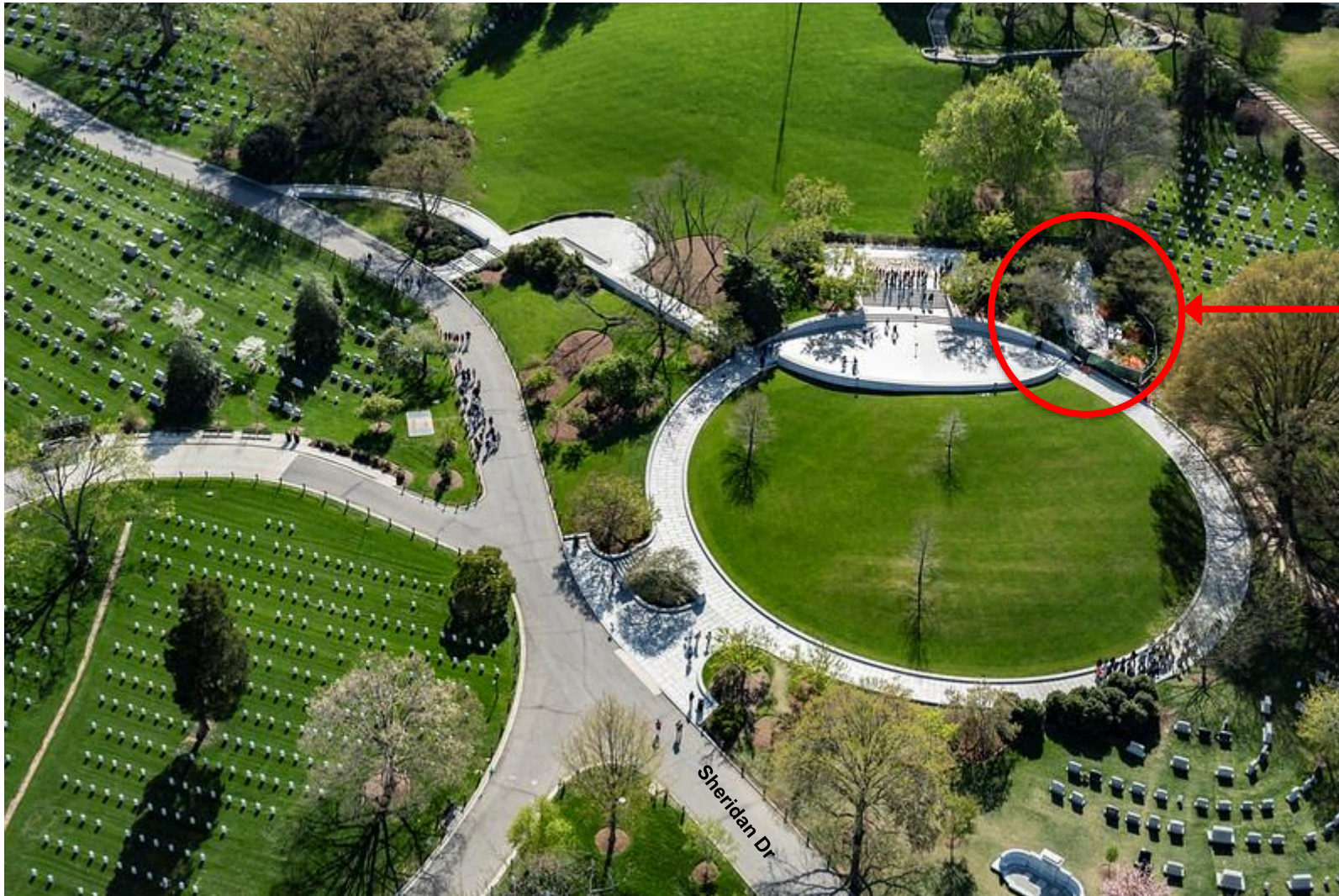


The boundary of the
proposed project
area is outlined in
red.

Aerial photograph of Memorial Avenue looking west towards Arlington House at Arlington National Cemetery, Arlington, Va., April 20, 2022. (U.S. Army photo by Elizabeth Fraser / Arlington National Cemetery / released)



Aerial photography of the John F. Kennedy gravesite and Arlington House, looking west, at Arlington National Cemetery, Arlington, Va., April 20, 2022. (U.S. Army photo by Elizabeth Fraser / Arlington National Cemetery / released)



The boundary of the proposed project area is outlined in red.

Aerial photography of the John F. Kennedy gravesite, looking west, at Arlington National Cemetery, Arlington, Va., April 20, 2022. (U.S. Army photo by Elizabeth Fraser / Arlington National Cemetery / released)



1. View from Arlington House overlook, looking east toward the President John F. Kennedy Memorial Gravesite (project location not visible)



2. View from Custis Walk overlook, looking east toward the President John F. Kennedy Memorial Gravesite (project location highlighted in red)



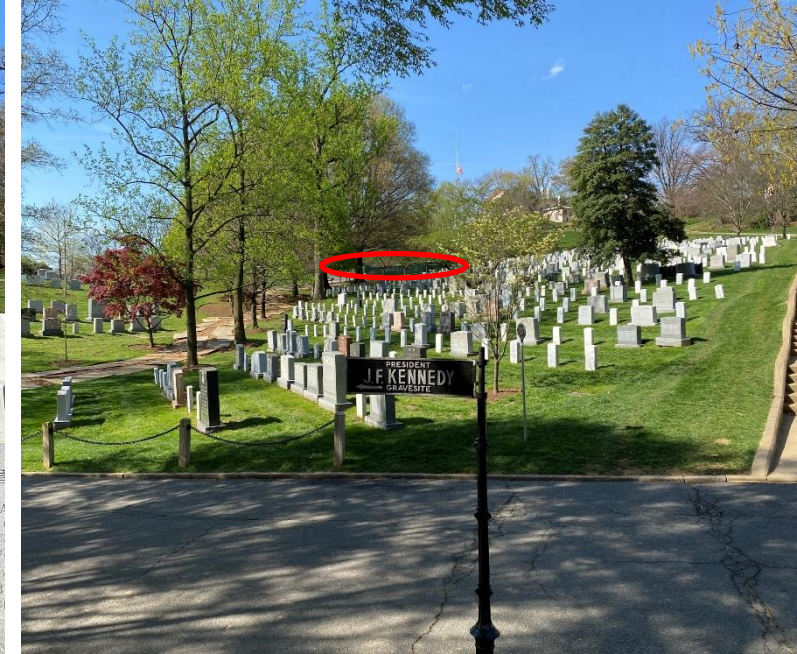
3. View from Mary Randolph gravesite, looking southeast toward the President John F. Kennedy Memorial Gravesite (project location highlighted in red)



4. View from Custis Walk, looking southwest toward the President John F. Kennedy Memorial Gravesite and Arlington House (project location highlighted in red)



5. View from Custis Walk, looking southwest toward the President John F. Kennedy Memorial Gravesite and Arlington House (project location highlighted in red)



6. View from Sheridan Dr., looking southwest toward the President John F. Kennedy Memorial Gravesite and Arlington House (project location highlighted in red)



7. View from Sheridan Dr., looking west toward the President John F. Kennedy Memorial Gravesite and Arlington House (project location not visible)



8. View from Sheridan Dr., looking west toward the John W. Weeks gravesite, President John F. Kennedy Memorial Gravesite, and Arlington House (project location not visible)



9. View from Sheridan Dr., looking west toward the President John F. Kennedy Memorial Gravesite and Arlington House (project location not visible)



10. View of entryway to the President John F. Kennedy Memorial Gravesite from Sheridan Dr., looking northwest (project location not visible)



11. View of the President John F. Kennedy Memorial Gravesite north walkway, looking northwest (project location not visible)



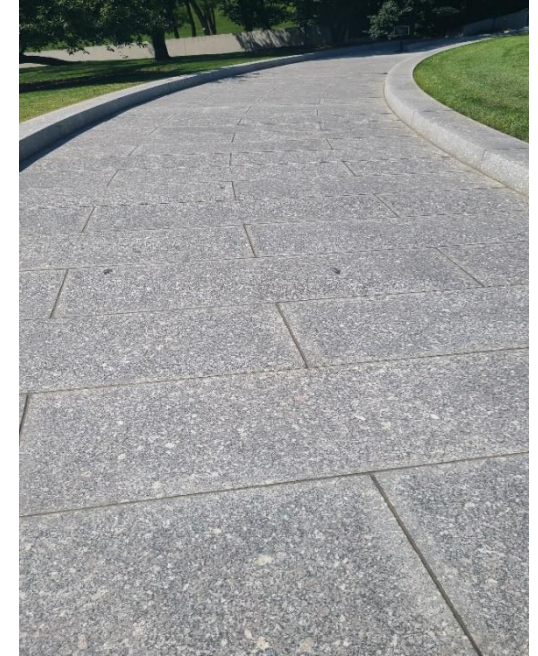
12. View of the President John F. Kennedy Memorial Gravesite north walkway, looking southwest toward the terrace plaza (project location highlighted in red)



13. North entry to Memorial Plaza (looking south). Three steps separate existing walkway from the plaza. Proposed access walkway intersects with this walk to the right (outside view of this image.)



14. South entry to Memorial Plaza (looking north). Four steps separate existing walkway from the plaza.



15. Proposed new walkway, will be constructed with the same materials as the existing (Deer Isle granite).



16. Existing flagstone path.



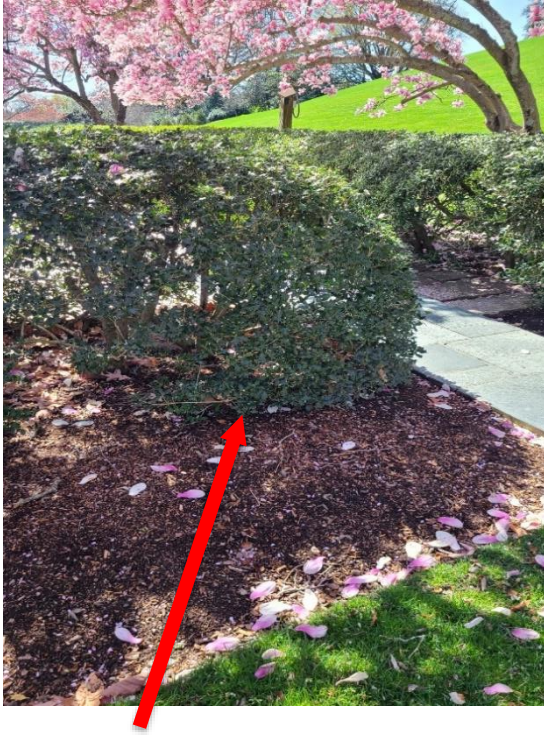
17. Granite curb at flagstone path to be removed and stored to make room for 6 foot wide granite walkway.



18. Northwest corner of existing flagstone path.



19. Existing south end of the flagstone path at north entrance to grave terrace.



20. Four foot section of hedge to be removed at the north side of the grave terrace to accommodate the wider walkway.



21. View of grave terrace from the south end of the flagstone path.



22. Eleven steps between memorial plaza and grave terrace that provide limited access to President Kennedy's burial site.

ARLINGTON National Cemetery

HONOR ★ REMEMBER ★ EXPLORE



Contact:
Arlington National Cemetery
1 Memorial Avenue
Arlington, VA 22211

usarmy.pentagon.hqda-anc-osa.mbx.cultural-resources@army.mil